



Australia Awards

# Impact of Studies

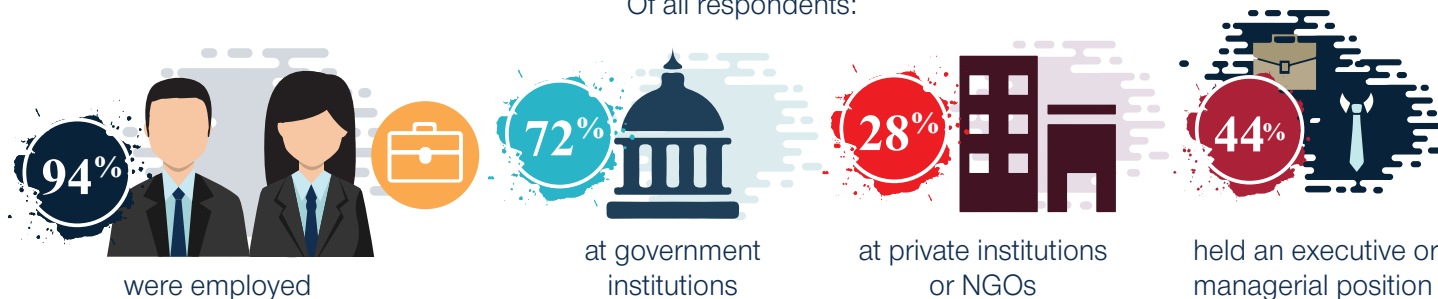
## Long Term Awards (LTA) Alumni

### 2020 Survey



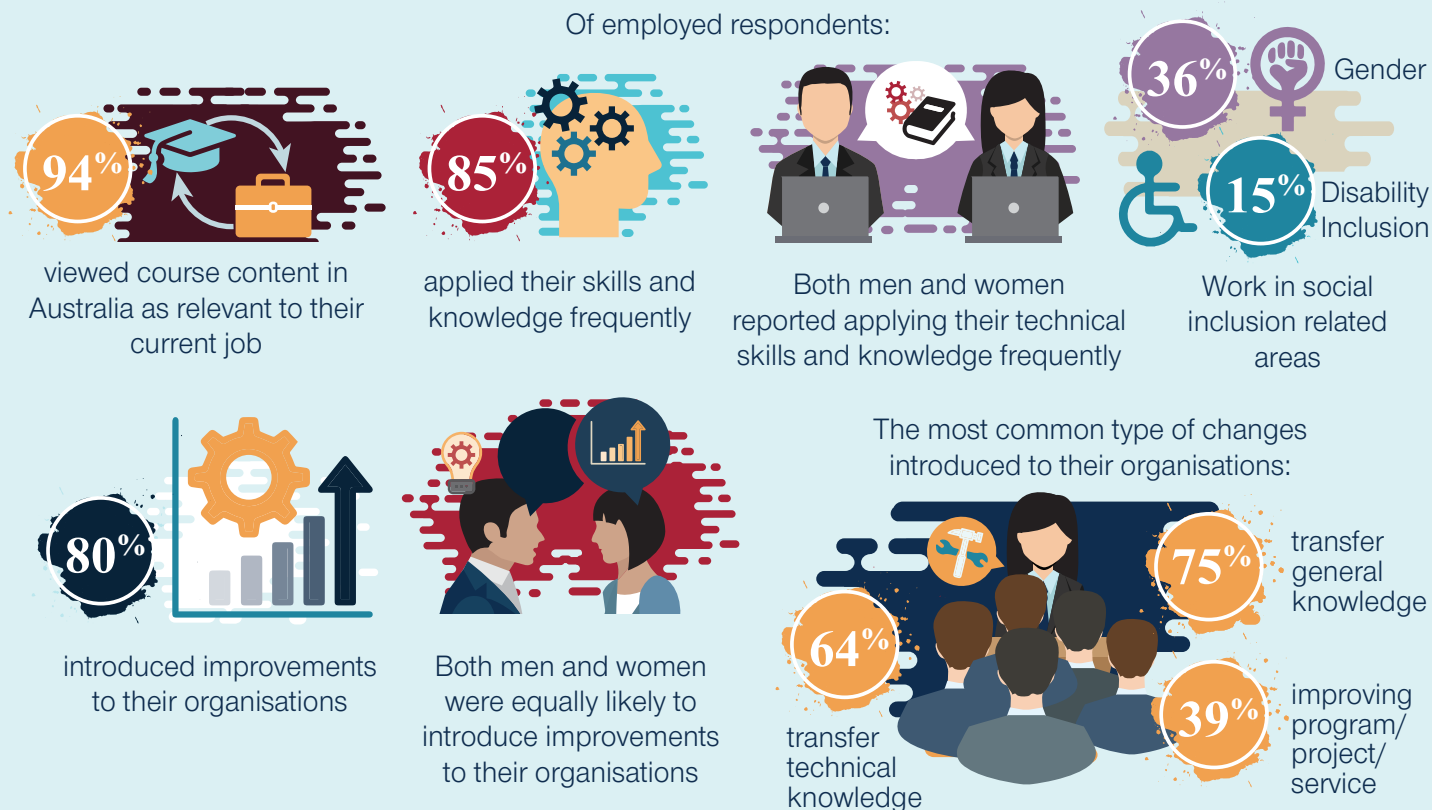
## Employment Situation

Of all respondents:



## Contribution of Skills, Knowledge and Networks in the Workplace

Of employed respondents:



Among employed respondents:



Source: Australia Awards LTA Annual Survey 2020 - Alumni cohorts returning in 2014 and 2017  
Sample size: 129 alumni (52% women) 95% confidence level and 8% error



Australia Awards

# Impact of Studies

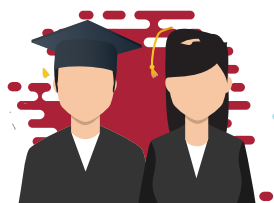
## Long Term Awards (LTA) Alumni

### 2020 Survey



## Mutually Advantageous Partnership Between Australia - Indonesia

Of all respondents:



69%

maintained  
contact with  
Australian  
individuals

54%

maintained  
contact with  
Australian  
organisations

98%

were regularly in contact  
with fellow Australia  
Awards Scholarships  
alumni from Indonesia

Of alumni whose organisations had professional links with Australia:



90%

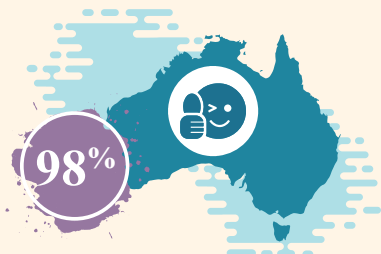
viewed these links as  
mutually beneficial



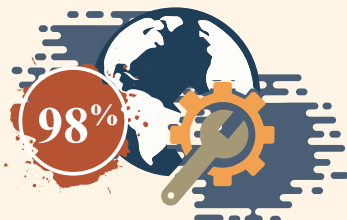
56%

involved in maintaining  
these links

## View of Australia



stated participating in LTA has  
enhanced their view of Australia



viewed Australia as having world-  
class technical expertise related to  
their respective technical fields



viewed Indonesia as having  
a strong and positive relationship  
with Australia

## Alumni Relation Activities

Over the year prior to the survey:

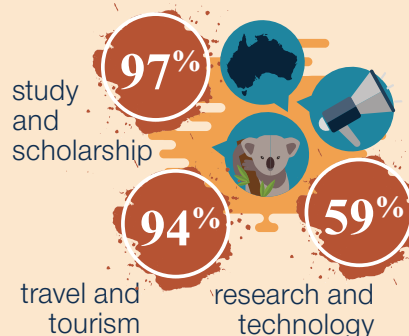


participated in alumni  
activities and accessed  
support services provided by  
Australia Awards in Indonesia  
(AAI) and Australian Embassy

Three most popular alumni activities:



In the month prior to the survey,  
respondents provided advice  
on the following topics  
related to Australia:



Source: Australia Awards LTA Annual Survey 2020 - Alumni cohorts returning in 2014 and 2017  
Sample size: 129 alumni (52% women) 95% confidence level and 8% error